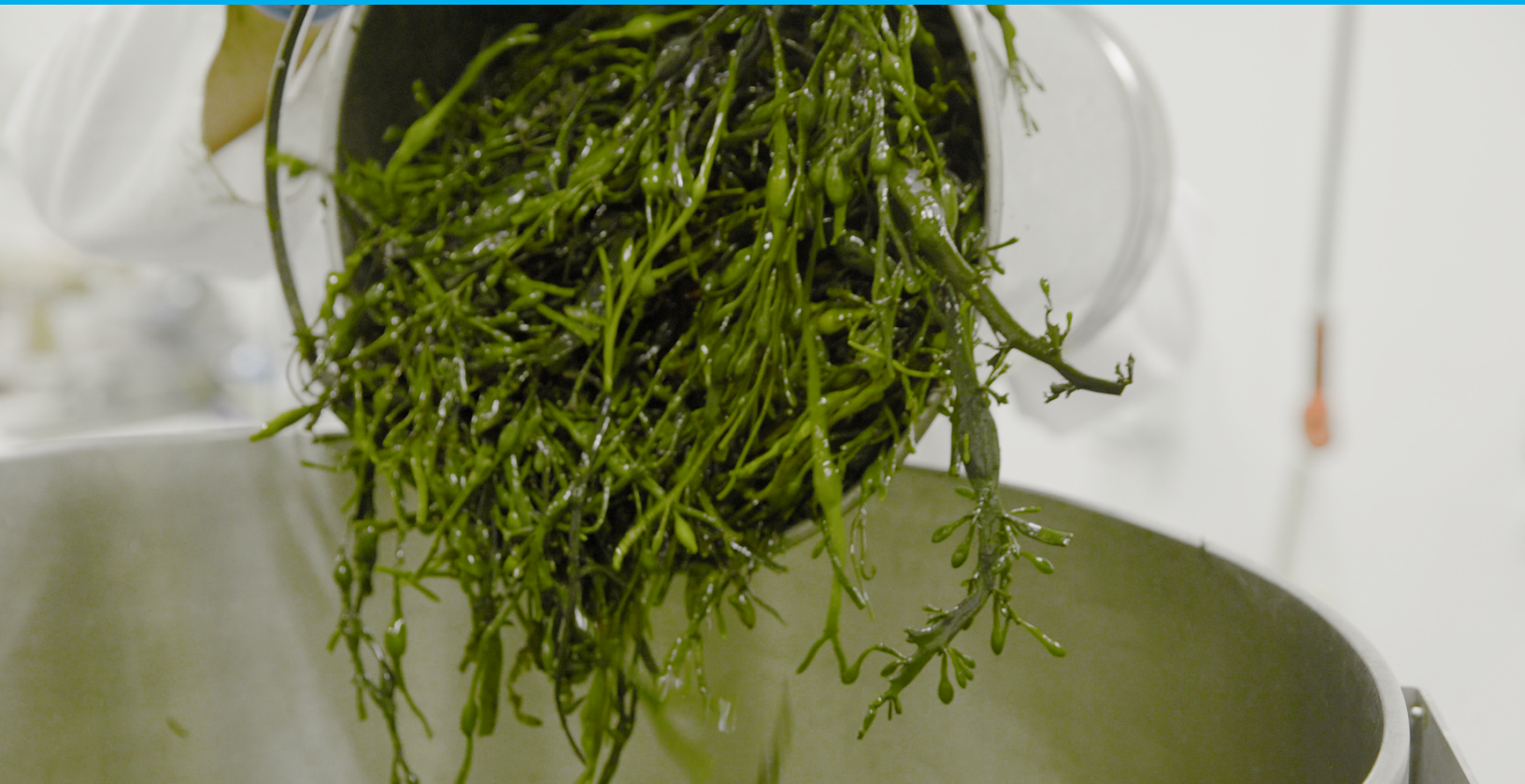


Solutions For Your Toughest
Mixing Applications in
Chemical

Pre-Processing of Seaweed



Pre-Processing of Seaweed

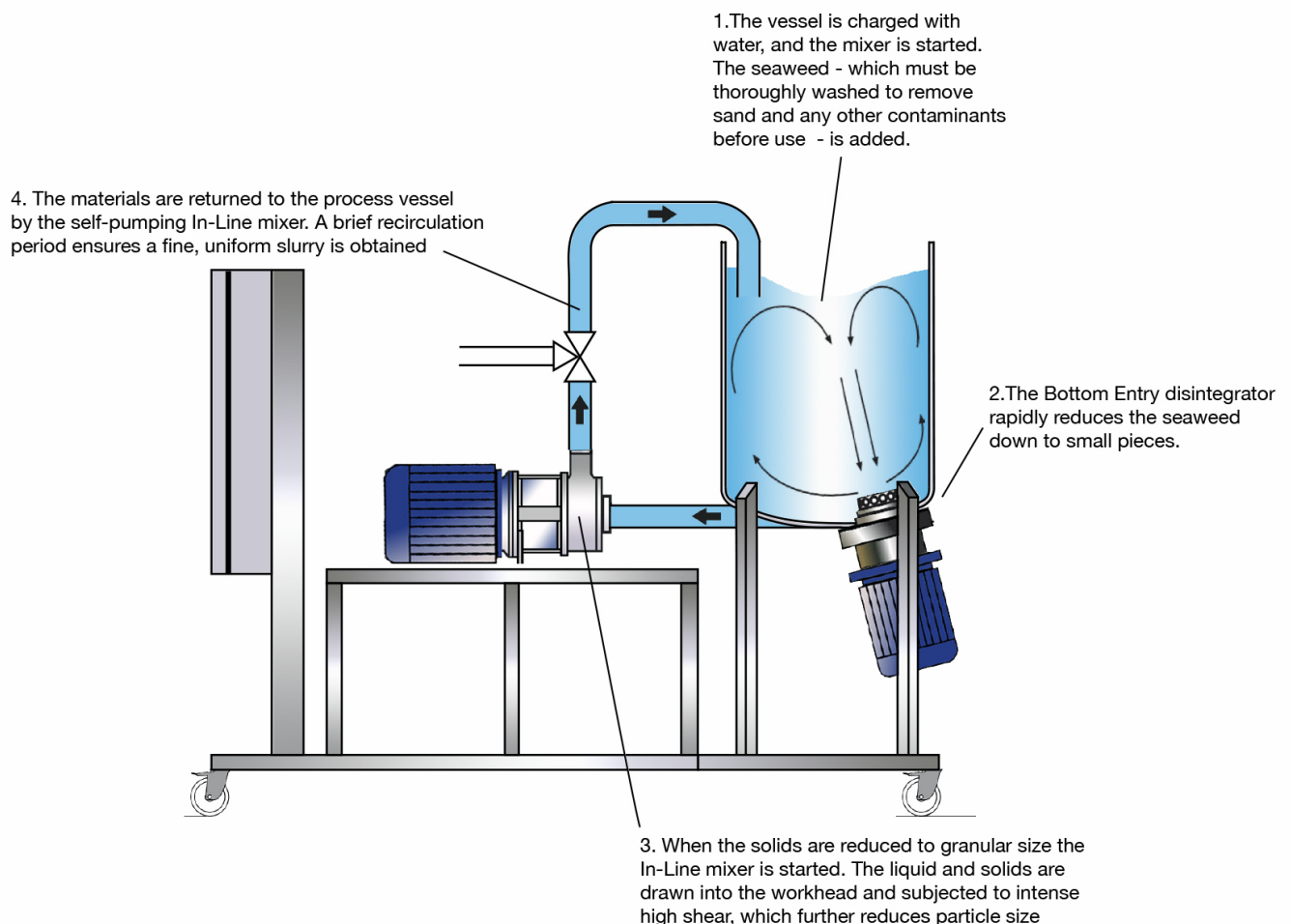
Seaweed is used in many products, including foods and animal feeds, cosmetics, fertilizers, and a wide range of specialty chemicals. Gelling and thickening agents such as agar, carrageenan, and alginates are also derived from seaweed.

The Process

Seaweed can be cultivated in the sea or grown commercially in tanks. If it is harvested from the sea it must be thoroughly washed to remove sand and other contaminants before subsequent processing. Once harvested, seaweed is subjected to a range of different treatments and chemical processes according to the required end use. With some applications, for example where the end product is spray dried, the process may include passing through a high pressure homogenizer. Whatever the subsequent processing may be, in most cases, the process is optimized if the seaweed is rendered down to give a uniform, fine particle size. Silverson High Shear Mixers are ideal for this process.

The Solution

A Silverson Disintegrator/Dissolver can rapidly reduce seaweed to a slurry suitable for further processing according to end use. Depending on the type of seaweed being processed, a solids content of sixty percent or more can be achieved. Here's how it works:



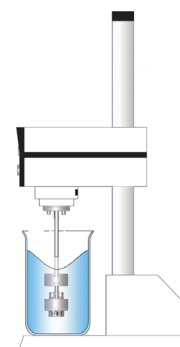
The Advantages

- Consistent, repeatable results.
- The unit can carry out the entire slurring process, eliminating the need for separate chopping and blending equipment.
- Additional processing requirements such as high pressure homogenization can be eliminated; where homogenization is still required, the uniform premix created with a Silverson mixer will pass through the homogenizer at a much faster rate, improving productivity.
- Minimized aeration reduces degradation of the product.
- Pilot Scale plants are available for batches of up to 50 US gallons. Silverson also offers large scale Disintegrator Dissolver systems for bulk production. These can all be configured to suit individual process requirements; a range of optional features can be offered:
 - Special disintegrator rotor design on the Bottom Entry mixer
 - Heating/cooling jacket on the vessel and In-Line to control temperature
 - Interchangeable stators and screens on the In-Line mixer allow precise control of product consistency and particle size

In addition to the Disintegrator/Dissolver units, Silverson offers a range of standard mixers for this application, the batch size, type of seaweed being processed and nature of the end product determines which would be most suitable:

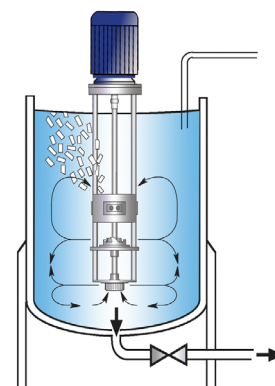
High Shear Laboratory Mixers

- Suitable for batch sizes up to 3 US gallons, depending on viscosity
- Duplex Assembly available for disintegration of small pieces of seaweed
- Provides a means of predicting the performance of production scale Silverson mixers when scaling up



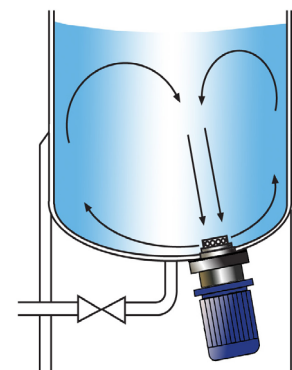
High Shear Batch Mixers

- Can be used on mobile floor stands or vessel mounted
- Duplex units (pictured) available for disintegration of larger solids
- Minimum maintenance
- Small units available for R&D and pilot production



High Shear Bottom Entry Mixers

- Special disintegrator rotor design as for the Pilot Disintegrator Plant available for stand-alone Bottom Entry mixers



For more information click here to go to: www.silverson.com

Email: sales@silverson.com • Telephone: (413) 525-4825

Information contained in this report is believed to be correct and is included as a guide only. No warranty is expressed or implied as to fitness for use or freedom from patents. Silverson Machines reserve the right to change product specification without notice.



Issue No. 81CA4