



## Bottom Entry Mixers

### Materials of Construction

All wetted parts are in 316 stainless steel. Electropolished finish is available as an optional extra.

### Motor Specifications

TEFC, washdown duty, explosion proof and stainless steel motors available as standard. Variable frequency drive available as an optional extra.

### Mounting

Stainless steel flange fitting available as standard. Clamp-on fitting optional for smaller machines.

### Single mechanical shaft sealing

A single carbon/ceramic mechanical shaft seal with viton elastomers is standard. Other face materials and elastomers available as an optional extra.

### Double mechanical shaft sealing

Double mechanical shaft seals are required when processing products that are abrasive, sticky or viscous or when the system is under vacuum. Sealant flushing systems can be supplied as an optional extra.

### Cleaning

Clean-in-place design. Simple, easy to clean construction.

### Operating Pressure

From full vacuum up to 150psi (10 Bar). Higher pressure units are available on request.

### Ultra Hygienic Model

Available with features including:

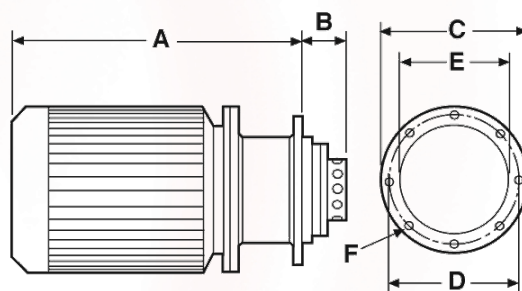
- Crevice-free construction
- Hygienic metal bellows shaft seal
- Electropolished finish

### Diagrams & Dimensions

Larger models available upon request. All dimensions are in inches.



## Bottom Entry Mixers



Model	HP	RPM	TEFC A	EXPF A	B	C	D	E	F
BE243	1	3600	12 <sup>5</sup> / <sub>8</sub>	12 <sup>3</sup> / <sub>4</sub>	2 <sup>5</sup> / <sub>8</sub>	6	5	4	6 x <sup>7</sup> / <sub>16</sub>
BE275	2	3600	13	12 <sup>1</sup> / <sub>2</sub>	3	8 <sup>1</sup> / <sub>4</sub>	7	5	6 x <sup>9</sup> / <sub>16</sub>
BE387	5	3600	18 <sup>1</sup> / <sub>4</sub>	18 <sup>3</sup> / <sub>4</sub>	3 <sup>1</sup> / <sub>4</sub>	10 <sup>1</sup> / <sub>2</sub>	9 <sup>1</sup> / <sub>2</sub>	7 <sup>1</sup> / <sub>2</sub>	8 x <sup>9</sup> / <sub>16</sub>
BE425	7.5	3600	19	19 <sup>3</sup> / <sub>4</sub>	3 <sup>1</sup> / <sub>4</sub>	10 <sup>1</sup> / <sub>2</sub>	9 <sup>1</sup> / <sub>2</sub>	7 <sup>1</sup> / <sub>2</sub>	8 x <sup>9</sup> / <sub>16</sub>
BE450	15	3600	24 <sup>3</sup> / <sub>4</sub>	24 <sup>3</sup> / <sub>4</sub>	4 <sup>1</sup> / <sub>8</sub>	10 <sup>1</sup> / <sub>2</sub>	9 <sup>1</sup> / <sub>2</sub>	7 <sup>3</sup> / <sub>4</sub>	8 x <sup>9</sup> / <sub>16</sub>
BE500	25	3600	24	26	4 <sup>1</sup> / <sub>2</sub>	12	10 <sup>1</sup> / <sub>2</sub>	7 <sup>3</sup> / <sub>4</sub>	8 x <sup>11</sup> / <sub>16</sub>
BE600	40	3600	37	35 <sup>1</sup> / <sub>2</sub>	4 <sup>11</sup> / <sub>16</sub>	12	10 <sup>1</sup> / <sub>2</sub>	8 <sup>1</sup> / <sub>2</sub>	8 x <sup>11</sup> / <sub>16</sub>

The dimensions shown are approximate only and certified diagrams should be used for installation purposes. Silverson reserves the right to change dimensions and specifications without notice.